

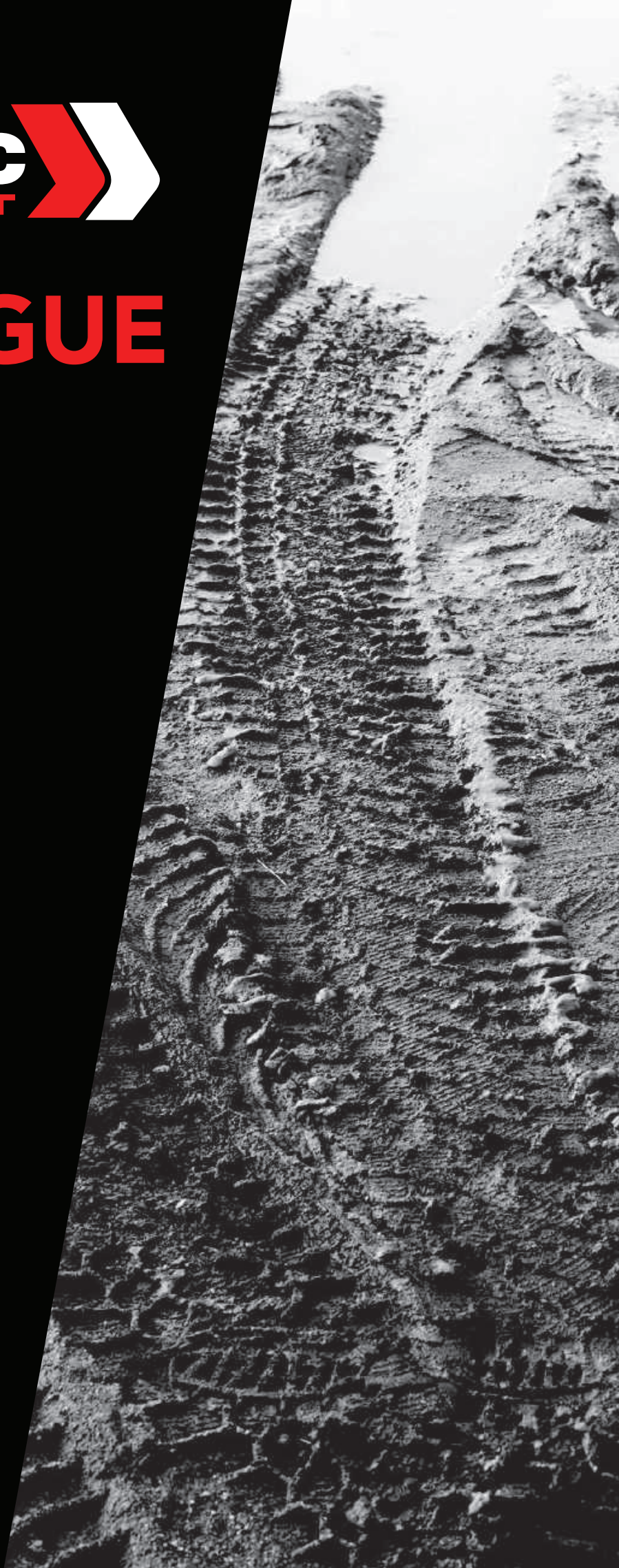


CATALOGUE

0800 468 782

**Supplying
& Servicing**

a Full Range
of Material
Handling
Equipment







Contents

Sunward Excavators

Manitou Track & Skid Steer Loaders

VF Venieri Wheel Loaders

LoadMax Wheel Loaders

CT Power Premium Forklifts

VMax Value Forklifts

Dual Dozer Laser Controlled Blade

Rubber Tracks Track Loader, Excavator & OTT

Augers

Ramps

Attachments

0800 468 782

Endraulic 3 Rennie Drive, Mangere, Auckland 2022

Tel +64 9 274 5059 **Email** info@endraulic.co.nz

Post PO Box 74053, Greenlane, Auckland 1546 **Web** www.endraulic.co.nz

Hours Mon-Fri 8:00am-4:00pm Saturday by appointment

Sunward

Excavators

About Sunward

Sunward has been manufacturing high quality machinery for more than 25 years. From their two square kilometre manufacturing facility in Changsha, Sunward produced more than \$1.6 billion of machinery in 2020. Sunward has been one of the World's Top 50 construction manufacturers for more than 10 years and is also one of the Top 20 Excavator manufacturers in the world. With a range of machines from 0.8T through to 1200T they have a complete range of earth engineering machinery, all produced to the highest quality and engineering standards.

Sunward in New Zealand

In New Zealand Endraulic has been supplying, servicing and supporting Sunward excavators for over 15 years. With more than 2000 machines delivered, Sunward excavators are working from Cape Reinga to Bluff. Everyday Kiwi businesses are relying on Sunward excavators to get the job done. Our sales have accelerated over the past few years due to strong repeat business and customer referrals, this highlights the respect the brand has garnered from our customers.



Endraulic
EQUIPMENT 
0800 468 782

SUNWARD

Sunward

Mini Excavators



SUNWARD

SWE18UF

SWE20F

SWE25UF

Weight kg	1880	1940	2650
Width mm	990/1320	990/1360	1500
Dig Depth mm	2410	2380	2840
Dump Height mm	2500	2720	3010
Reach mm	3525	3770	4355
Bucket Breakout kN	23	23	24
Arm Breakout kN	10	10	12
Aux Flow Std Lpm	36	36	48
Engine Brand	Kubota	Yanmar	Yanmar
Engine HP	18	18	19



Sunward

Mini Excavators



SUNWARD

	SWE35UF	SWE60UF	SWE90UF
Weight kg	3850	5700	8750
Width mm	1700	1960	2250
Dig Depth mm	3120	3710	4550
Dump Height mm	3400	3950	5230
Reach mm	4925	5615	7275
Bucket Breakout kN	32	47	64
Arm Breakout kN	23	31	38
Aux Flow Std Lpm	50	92	120
Engine Brand	Kubota	Kubota	Yanmar
Engine HP	25	49	62



Sunward

Medium Excavators



SUNWARD

	SWE80E9	SWE135E	SWE155E	SWE155UF
Weight kg	7680	13800	14800	16500
Width mm	2130	2500	2600	2600
Dig Depth mm	4070	5525	5525	5525
Dump Height mm	5170	6145	6200	6200
Reach mm	7205	8640	8700	8370
Bucket Breakout kN	58	93	100	100
Arm Breakout kN	40	69	76	76
Aux Flow Std Lpm	110	143	127	127
Engine Brand	Yanmar	Cummins	Cummins	Cummins
Engine HP	59	115	125	120





Sunward

Large Excavators



SUNWARD

	SWE205E	SWE215E	SWE235E	SWE365E
Weight kg	21100	21300	22600	36200
Width mm	2800	2800	2990	3190
Dig Depth mm	6560	6430	6635	7095
Dump Height mm	6980	6760	7030	7310
Reach mm	9940	9490	9780	10940
Bucket Breakout kN	155	155	161	253
Arm Breakout kN	110	123	108	198
Aux Flow Std Lpm	225	240	240	324
Engine Brand	Cummins	Cummins	Cummins	Cummins
Engine HP	166	166	188	303

Manitou

Track & Skid Steer Loaders

Mustang, Gehl & Manitou

Mustang skid steer loaders have been manufactured since 1965, and sold in New Zealand by Endraulic since the early 1980s. The brand has always been known for its combination of strength and reliability that contractors depended on. In 1997 Gehl Company purchased Mustang to improve their product offering and supplied the machines under the two different brand names with unique selling points. In 2007 Manitou purchased Gehl company to add skid steer loaders to their impressive material handling portfolio of products. In 2020 the decision was made to transition to only supplying the Manitou brand in New Zealand. While the branding may have changed, the history of strength and reliability remains strong in the product. Manitou is committed to the compact equipment market with one of the largest ranges of machines available.

History of Manitou

The history of Manitou Compact Equipment dates back to 1865 in mid-west America with the Owatonna Force-feed Broadcast Seeder. By 1888, the company had expanded to become the Owatonna Manufacturing Company. In 1965 OMC produced the first Mustang Skid-steer loader - the Model 1000. The machine was a revolution for farmers with fast lift and dump cycle times and it could turn on the spot, speeding up jobs on the farm and reducing labour costs. The versatility of the product saw it move quickly into construction and other industries. Mustang innovated many design concepts on skid steer and compact track loaders now seen across all machines on the market, most notably being the first to use hydrostatic transmissions.



Endraulic
EQUIPMENT 
0800 468 782

MANITOU
GROUP
 **MANITOU GEHL**  **MUSTANG**
BY **MANITOU**

Manitou

Track Loaders



MANITOU

GROUP

MANITOU GEHL MUSTANG
MANITOU

	1050RT	1350RT	1650RT	2100VT	3200VT
Rated Load @50% kg	680	875	1069	1363	2075
Tipping Load kg	1360	1750	2138	2726	4150
Lift Height mm	2769	2794	3038	3073	3302
Weight kg	2141	2953	3693	4021	5267
Width less bucket mm	1290	1448	1676	1674	1766
Length with bucket mm	2985	3076	3205	3530	4059
Height ROPS mm	1816	1930	1969	2045	2111
Aux flow Std Lpm	55	64	71	87	102
High Flow Lpm	N/A	N/A	119	114	142
Engine Brand	Yanmar	Yanmar	Yanmar	Yanmar	Deutz
Engine HP	35	47	70	70	114



Manitou

Skid Steer Loaders



MANITOU
GROUP
MANITOU GEHL MUSTANG
& MANITOU

	1050R	1350R	1650R	1900R	2200R	2750V
Rated Load @50% kg	476	612	748	862	998	1247
Tipping Load kg	952	1224	1496	1724	1996	2494
Lift Height mm	2731	2790	3018	3061	3124	3289
Weight kg	1905	2327	2777	3109	3611	4559
Width less bucket mm	1229	1364	1605	1638	1664	1803
Length with bucket mm	2896	3048	3101	3226	3467	3810
Height ROPS mm	1786	1930	1948	2032	2057	2082
Aux flow Std Lpm	55	70	71	70	90	98
High Flow Lpm	N/A	N/A	119	119	133	126
Engine Brand	Yanmar	Yanmar	Yanmar	Yanmar	Yanmar	Yanmar
Engine HP	35	47	70	70	72	72

VF Venieri

Wheel Loaders

Background

In 1948 Ferdinando and Carlo Venieri built their first crawler tractor. It was assembled from parts of tracked military machinery leftover from the war and cleverly repurposed for agricultural uses. After the success of their first machines the brothers expanded operations and moved into wheeled machines and then machines designed and built from the ground up. In the 1960's transitioned from agricultural equipment into loader based earthmoving equipment.

During this time VF Venieri produced machines under their own brand for the Italian market, but partnered with other brands for international sales distribution including household names such as Massey Ferguson, Yanmar and Case. In recent years instead of being beholden to big brands VF Venieri has changed tack and decided to promote their own brand worldwide through dealer networks.



Endraulic
EQUIPMENT 
0800 468 782

 **VENIERI 70**
SPA 1948-2018

VF Venieri

Wheel Loaders



	1.63C	4.63H	7.63C	9.63C	12.63B	18.63B
Rated Load kg	925	2100	2500	3500	4000	6900
Tipping Load kg	2300	4600	5600	6200	8000	15500
Bucket m ³	0.5	1.0	1.4	1.8	2.2	3.5
Lift Height mm	2960	3260	3615	3700	4000	4200
Dump Height mm	2295	2550	2890	2900	3100	3140
Weight kg	3100	6200	7860	9000	12500	18500
Width less bucket mm	1365	1873	2117	2195	2380	2700
Length with bucket mm	4306	5270	5900	6100	6930	8000
Height ROPS	2252	2760	2888	2980	3214	3400
Max Speed	40	30	40	40	40	40
Engine Brand	Yanmar	Yanmar	Deutz	Deutz	Deutz	Deutz
Engine HP	50	72	106	128	164	228



VF Venieri

Telescopic Loaders



	1.63TL	8.63TL
Rated Load kg	990	2650
Tipping Load kg	2300	6400
Bucket m ³	0.5	1.2
Lift Height mm	3925	5480
Dump Height mm	3190	4485
Weight kg	3600	9100
Width less bucket mm	1495	2430
Length with bucket mm	4800	6613
Height ROPS	2250	2710
Max Speed	40	30
Engine Brand	Yanmar	Deutz
Engine HP	50	143

LoadMax Wheel Loaders

Endraulic have been supplying LoadMax wheel loaders into the New Zealand market for nearly 15 years. Offering unbeatable value for money LoadMax wheel loaders have the basics you need and none of the fancy gismos you don't. We put every machine through a 50-point pre-delivery check prior to delivery, and support the product with parts and service. When you need a loader, but not the high price tag of big brand machines nor the unreliability of used machines, LoadMax is the best choice.



Endraulic
EQUIPMENT 
0800 468 782

LOADMAX



LoadMax

Wheel Loaders

LoadMax

	WL100E	WL150E	WL180E	WL200E
Rated Load kg	1000	1500	1800	2000
Tipping Load kg	2160	3300	3950	4250
Lift Height mm	3345	3550	3800	4250
Dump Height mm	2650	2850	3200	3400
Weight kg	2950	3600	5950	6300
Width less bucket mm	1680	1850	2050	2200
Length with bucket mm	4295	4950	5750	5800
Height ROPS mm	2520	2600	2700	2850
Max Speed kph	26	26	26	26
Engine Brand	Xichai	Xichai	Yunnei	Cummins
Engine HP	50	50	100	100





LoadMax

Wheel Loaders

LOADMAX

	WL250E	WL300E	WL350E	WL500E
Rated Load kg	2500	3000	3500	5000
Tipping Load kg	5050	6700	7120	10200
Lift Height mm	4280	4150	4210	4100
Dump Height mm	3400	3200	3260	3200
Weight kg	8050	10000	12000	17100
Width less bucket mm	2320	2430	2250	3050
Length with bucket mm	6100	6890	6890	7920
Height ROPS mm	3030	3070	3130	3400
Max Speed kph	35	35	35	38
Engine Brand	Weichai	Weichai	Cummins	Cummins
Engine HP	123	123	147	218

Dual Dozer

Laser Controlled Blade

- Full Machine Control
- Accurate to within 5mm
- Complete jobs up to 10 times faster
- Wheels mounted behind the blade
- Operates right up to pad edges and into corners
- Dual blades allows operation in forwards and reverse
- Universal stops fit all makes and models
- Optional Tractor Mount available
- Optional bracket for front mounting wheels
- Optional Mirror Kit allows you to view front of blade

DUAL DOZER
Laser Controlled

	DD6	DD7	DD8
Width mm	1800	2100	2400
Weight kg	682	727	773

Dual Dozer

Laser Controlled Blade

HitchDoc have been manufacturing Dual Dozer Laser Controlled Blades in the USA for more than 20 years. Endraulic have been supplying the blade in New Zealand for almost 10 years proving its rugged reliability in our conditions. The product has proven extremely popular here due to its rear mounted wheels allowing the blade to operate close to the edges of pads and into corners. Combined with your choice of laser package the blade can run on auto mode and level sites to within 5mm all the while dealing with slopes and grades.



Endraulic
EQUIPMENT

0800 468 782

DUAL-DOZER
Laser Controlled

CT Power

Premium Forklifts

CT Power are a Toyota Industries group company producing proven design, high quality forklifts without all the gadgets you don't need and at a big discount to the main brands. They feature ergonomic operation, superior quiet Taiwanese transmission, durable German mast system, fully welded frame, Japanese Shimatzu control valve and hosing and Taiwanese solid tyres.



Endraulic
EQUIPMENT

0800 468 782

CT POWER

Manufactured by
Global-Power Co., Ltd

 **TOYOTA INDUSTRIES GROUP**

CT Power

Premium Forklift



CT POWER

Manufactured by
Global-Power Co., Ltd
TOYOTA INDUSTRIES GROUP

	7L18	7L25	7L35	7L50
Rated Load kg	1800	2500	3500	5000
Engine Type	Diesel/LPG	Diesel/LPG	Diesel/LPG	Diesel
Engine Make	Isuzu/Nissan	Isuzu/Nissan	Isuzu/Nissan	Nissan
Tyre Type	Solid	Solid	Solid	Solid
Mast Type	Triplex Container	Triplex Container	Triplex Container	Triplex Container
Turning Radius mm	1980	2250	2615	3200
Operating Weight kg	3050	3800	4600	6500

VMax

Value Forklifts

V-Max Diesel Forklifts are the lowest price forklifts in New Zealand while still providing long term reliability. They achieve this by having a very basic specification without the bells and whistles offered on big brand machines. Vmax are ideally suited to low usage operations that still require the reliability of new. Why risk buying someone else's 2nd hand junk when you can have the reliability and piece of mind of new machinery with warranty for a similar price? Endraulic stock the most popular 1.8T, 2.5T and 3.5T models with pneumatic tyres, 3 stage masts, with a dual wheel kit option.



Endraulic
EQUIPMENT 
0800 468 782

VMAX

PERFECT LIFTING FROM VMAX.

VMax

Value Forklift



CPCD18

CPCD25

CPCD35

CPCD50

Rated Load kg	1800	2500	3500	5000
Engine Type	Diesel	Diesel	Diesel	Diesel
Engine Make	Xinchai	Xinchai	Xinchai	Xinchai
Tyre Type	Pneumatic	Pneumatic	Pneumatic	Pneumatic
Mast Type	Triplex Container	Triplex Container	Triplex Container	Triplex Container
Turning Radius mm	2060	2240	2430	2740
Operating Weight kg	2890	3680	4700	6400

PATENTED 3S INTERNAL IRON CORE

- Prevents detracking and minimizes vibrations for lower maintenance costs

HIGH-TENSILE, RUBBER SEALED STEEL CABLES PROTECTED BY HEAVY-DUTY CARCASS AND TREAD

- Resists carcass punctures and cable corrosion to extend service life

CURBSHIELD TECHNOLOGY

- Extends service life prior to track degradation process triggered by edge cutting leading to iron core corrosion



Excavator Tracks

CAMSO MEX SD



Track Loader Tracks

CAMSO CTL HXD

SINGLE-CURE TECHNOLOGY WITH NEXT GENERATION RUBBER COMPOUND

- Promotes even tread wearing for long, predictable tread life

TRACKGUARD IRON CORE WITH HEAVY-DUTY CARCASS

- Improves rolling path life for reduced failures and enhanced durability



OPTIMIZED TREAD PATTERN WITH NEXT GENERATION RUBBER COMPOUND

- Maintains excellent traction throughout tread life

ENDLESS HIGH-TENSILE STEEL CABLES

- Eliminates unexpected downtime due to cable/track breakage

OTT Tracks



Augers



Digga Auger Drives have been manufactured in Australia for over 30 years. Digga know their product is robust and back it with a 5 year warranty. We can supply teeth to suit all ground conditions, auger bits from 100mm – 1200mm, and brackets to fit any machine.

5 YEARS

★ GEARBOX WARRANTY ★

3 YEARS

★ MOTOR WARRANTY ★



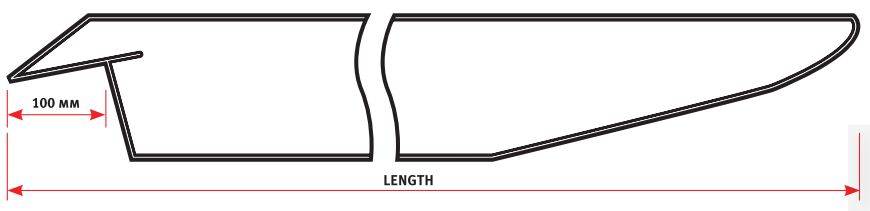
	PDX	PDX2	PDX3	PD3	PD3-2	PD4	PD5
Output Shaft kg HEX	50.8mm	50.8mm	50.8mm	50.8mm	50.8mm	50.8mm	50.8mm
Carrier Weight tonne	.5-2	2-4	2-4	3-6	4-6	4-6	4-6
Max Flow Lpm	20-40	30-50	40-60	50-70	30-75	60-80	75-95
Max Pressure BAR	240	240	240	240	200	240	240
Max Torque Nm	1900	2500	2950	3700	2950	4600	5700
Weight kg	45	45	45	56	75	56	62

Ramps

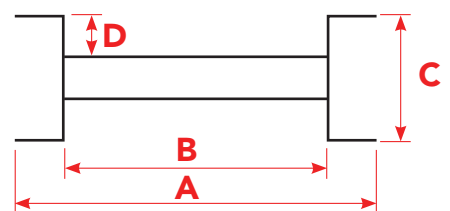
Manufactured in NZ for over 30 years our ramps are the highest quality on the market. Designed for NZ conditions our ramps are durable giving years of reliable service and making them the best value product on the market.



	L100/270	125/330	150/330	150/360	175/360	200/360
Capacity per pair	1900	3000	4500	4500	6000	7500
Weight per ramp	20	32	43	47	58	68
Length mm	2700	3300	3300	3600	3600	3600
Dimensions A	380	490	550	550	650	730
Dimensions B	300	400	450	450	530	600
Dimensions C	100	125	150	150	175	200
Dimensions D	30	40	45	45	60	60



Side View



End View

Blades



Brooms



Chipper



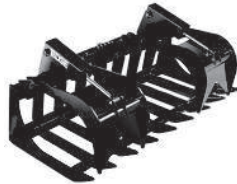
Concrete Tools



Grader Blades



Grapples



Log Splitter



Mowers



Mulchers



Pallet Forks



Rock Wheels



Rakes



Tree Spades



Buckets



Stump Grinders



Augers



Hitchers



Power Rake



Cold Planer



**6-Way Dozer Blade
Grader / Leveler**









© **Endraulic**
EQUIPMENT
0800 468 782
NATIONWIDE

SERVICE AGENTS

Northland Moir Diesel | Tel 027 716 6001

Warkworth Truck Track & Marine | Tel 09 425 9920

Waikato Pro Mechanical | Tel 07 957 2695

Tauranga Forklift HQ | Tel 07 541 3377

Gisborne Hydraulics Ltd | Tel 06 868 6226

Rotorua SDM Mechanical & Engineering Ltd | Tel 07 3455 217

Taupo Parts & Services | Tel 07 378 2673

Napier Motorworks Hawkes Bay | Tel 06 843 3895

Whakatane Truck Fix | Tel 07 308 8316

Taranaki Mugeridge Diesel Services | Tel 0274 334 747

Whanganui CRV Equipment | Tel 06 348 7860

Palmerston North Centra Forklifts | Tel 06 355 9033

Horowhenua McLachlans Services | Tel 027 675 2914

Wellington Industrial Equipment Servicing | Tel 04 589 0350

Nelson Tasman Heavy Diesel | Tel 027 344 3699

Blenheim Hamilton's Machinery Services | Tel 03 572 5434

Greymouth Colin Homes Hydraulics | Tel 027 435 1850

Christchurch GMH Tech | 021 160 8002

Otago Ferguson Engineering | Tel 03 489 6452

Southland Southland Forklift Hire | Tel 03 218 8533

Endraulic 3 Rennie Drive, Mangere, Auckland 2022

Tel +64 9 274 5059 | 0800 468 782 **Email** info@endraulic.co.nz

Post PO Box 74053, Greenlane, Auckland 1546 **Web** www.endraulic.co.nz

Hours Mon-Fri 8:00am-4:00pm | Saturday by appointment